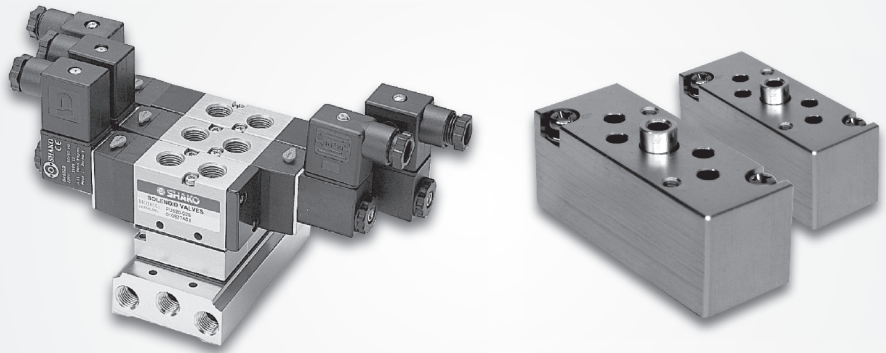


Features

- * The shut-off block allows a valve to be removed without switching off other solenoid valves and air supply.
- * Apply to PU520, PU530 series.



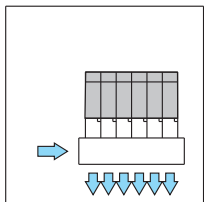
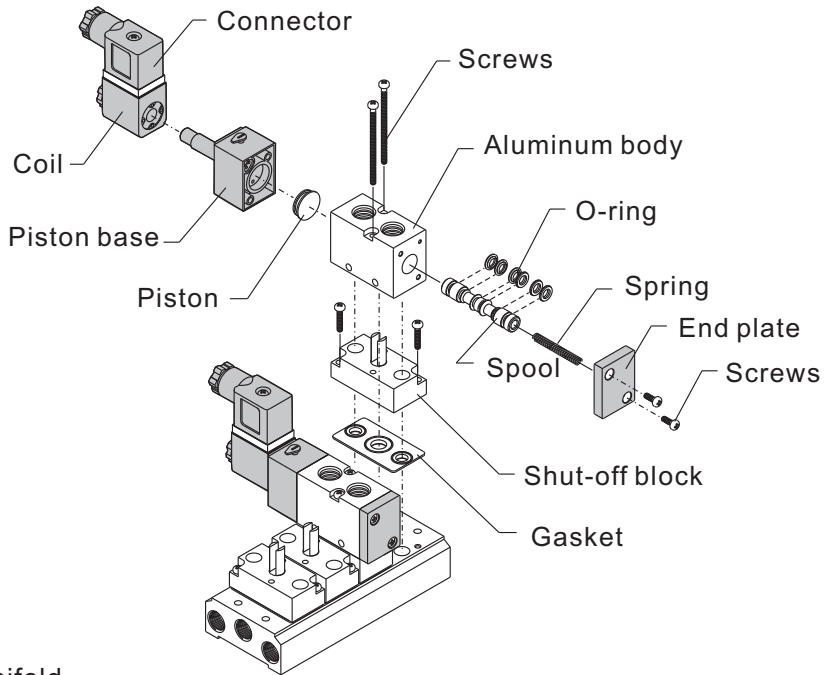
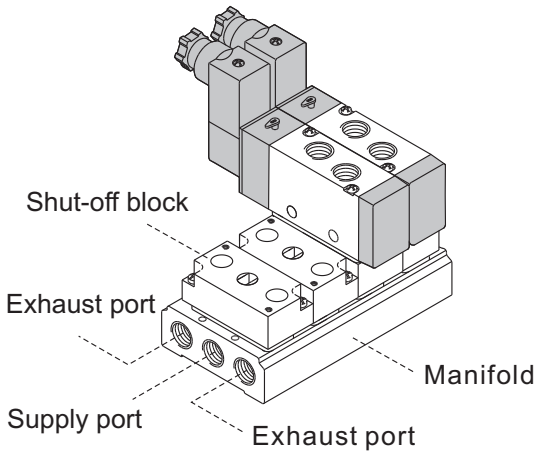
How to order

S0B52 — **02**

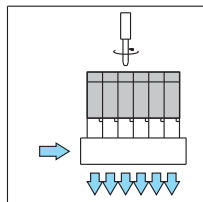
Shut-off block — Port size

02	1/4"
M5	M5

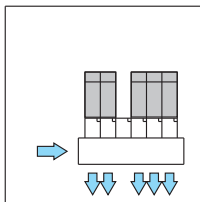
Installation



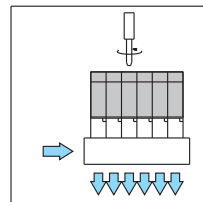
1. Select a solenoid valve needs to be removed.



2. Loosen retaining screws on the valve.



3. Remove the valve and shut-off block automatically cut off air supply and exhaust in the meantime.



4. Replace a new solenoid valve and shut-off block will reopen the ports and re-energize the new valve.