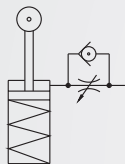


## Symbol



## Features

- \* Stopper cylinder utilizes the top roller spring return as a stopper for work carrier.
- \* It is usually applicable to work carrier positioning and stop.
- \* It is often used for conveyor line.

## How to order

SC

Stopper cylinder

32

Bore size

32  $\phi 32$

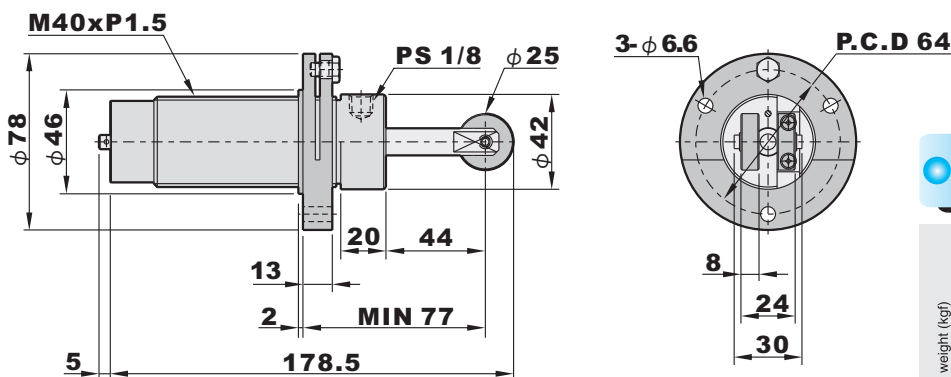
B

30

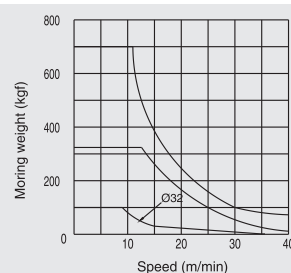
Stroke



## Dimensions



## Allowance stop chart



## Specifications

| Bore size                | $\phi 32$                   |
|--------------------------|-----------------------------|
| Port size                | 1/8"                        |
| Fluid                    | Compressed air              |
| Acting                   | Single acting               |
| Operation                | Roller type                 |
| Operating pressure range | 2 ~ 9.9 kgf/cm <sup>2</sup> |
| Max. operating pressure  | 15 kgf/cm <sup>2</sup>      |
| Cushion                  | NBR                         |
| Lubrication              | Not required                |
| Body material            | Brass or aluminum alloy     |
| Ambient temperature      | 5°C ~ 50°C                  |
| Weight                   | 1350g                       |

## Loading chart

