

## Features

- \* Hydraulic self compensation.
- \* Adjustable cushion.
- \* Double cushion type.
- \* Simple installation.

## Installation cautions

- \* Stop at 1mm before effective stroke.
- \* Avoid any painting or damage on rod.
- \* Strike angle on the collision head should be at right 90°, or less than 2° difference.
- \* Please pay attention for the hardness of mounting plate to stand the strike.



## How to order

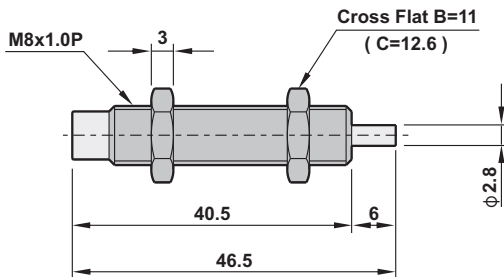
DA 25 25 - H N P

DA	Self compensation type	Tube O.D.	Stroke	H	High impact speed	Blank	W/I cap	Blank	W/O positioning screw
DAD	Double cushion type			N	Medium impact speed	NC	W/O cap	P	W/I positioning screw
CA	Adjustable type			L	Low impact speed				

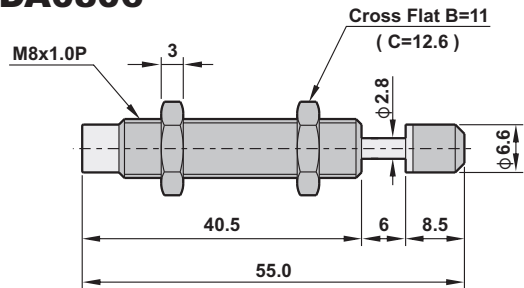
Available for DA, DAD only

## Dimensions

### DA0806-NC



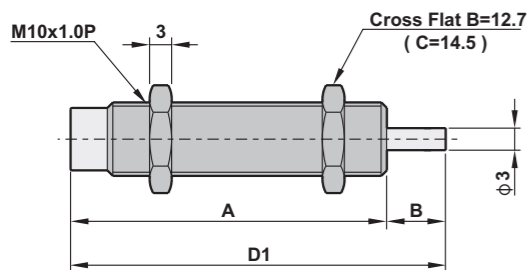
### DA0806



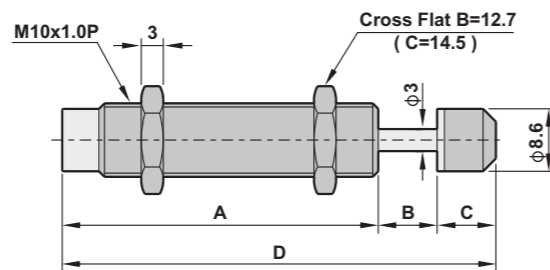
Model no.	Stroke mm	Max. Nm per cycle Nm	Effective weight We(Kg)	Max impact speed m/s	Max. Nm per hour Nm	Operating temperature °C
DA0806-H	6	1.8	0.9~5.6	2	2400	-15~75
DA0806-N	6	1.8	2.5~10	1.2	2400	-15~75
DA0806-L	6	1.8	5.6~22.5	0.8	2400	-15~75

## Dimensions

### DA1005, 1008-NC



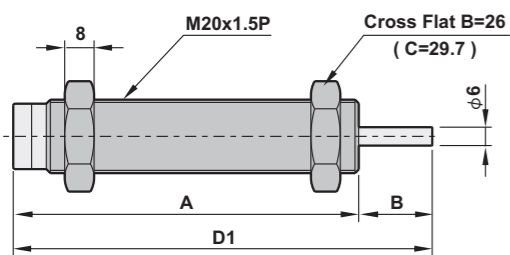
### DA1005, 1008



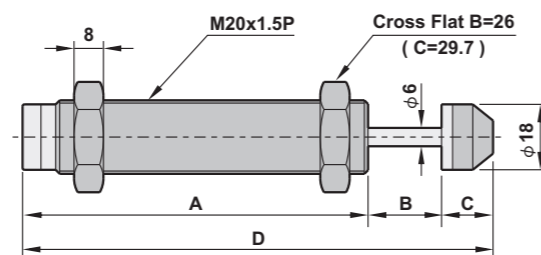
Model	A	B	C	D	D1
DA1005	45.5	5	8.5	59	50.5
DA1008	45.5	8	8.5	62	53.5

Model no.	Stroke mm	Max. Nm per cycle Nm	Effective weight We(Kg)	Max impact speed m/s	Max. Nm per hour Nm	Operating temperature °C
DA1005-H	5	3.2	0.9~4.4	2.6	5760	-15~75
DA1005-N	5	3.2	2.8~10	1.5	5760	-15~75
DA1005-L	5	3.2	10~40	0.8	5760	-15~75
DA1008-H	8	3.2	0.9~4.4	2.6	5760	-15~75
DA1008-N	8	3.2	2.8~10	1.5	5760	-15~75
DA1008-L	8	3.2	10~40	0.8	5760	-15~75

### DA2020, 2030, 2050-NC



### DA2020, 2030, 2050

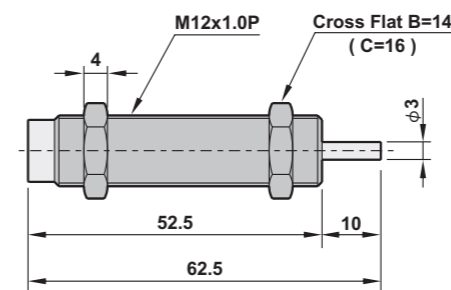


Model	A	B	C	D	D1
DA2020	94	20	14	128	114
DA2030	112	30	14	156	142
DA2050	156.5	50	14	220.5	206.5

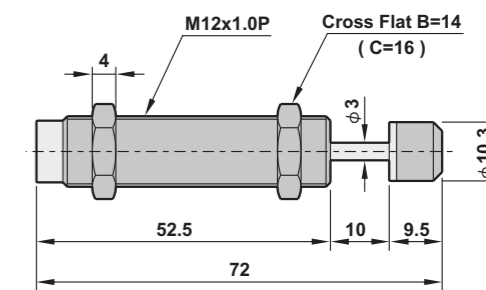
Model no.	Stroke mm	Max. Nm per cycle Nm	Effective weight We(Kg)	Max impact speed m/s	Max. Nm per hour Nm	Operating temperature °C
DA2020-H	20	35	6.8~12	3.2	42000	-15~75
DA2020-N	20	35	17.5~70	2	42000	-15~75
DA2020-L	20	35	48.6~777	1.2	42000	-15~75
DA2030-H	30	46	9~36	3.2	55200	-15~75
DA2030-N	30	46	23~92	2	55200	-15~75
DA2030-L	30	46	64~575	1.2	55200	-15~75
DA2050-H	50	62	7~19.8	4.2	70200	-15~75
DA2050-N	50	62	18.3~55.1	2.6	70200	-15~75
DA2050-L	50	62	55~496	1.5	70200	-15~75

## Dimensions

### DA1210-NC

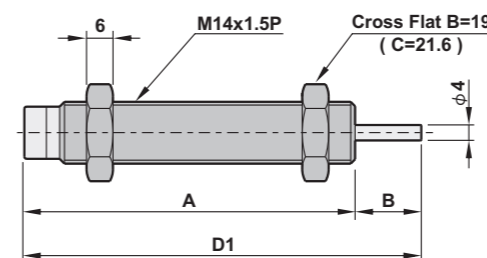


### DA1210

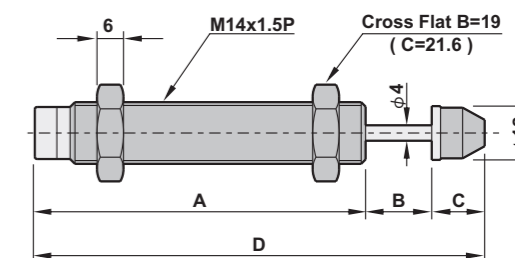


Model no.	Stroke mm	Max. Nm per cycle Nm	Effective weight We(Kg)	Max impact speed m/s	Max. Nm per hour Nm	Operating temperature °C
DA1210-H	10	6	1.8~1.2	2.6	10800	-15~75
DA1210-N	10	6	5.3~18.7	1.5	10800	-15~75
DA1210-L	10	6	18.7~75	0.8	10800	-15~75

### DA1412, 1415, 1416-NC



### DA1412, 1415, 1416

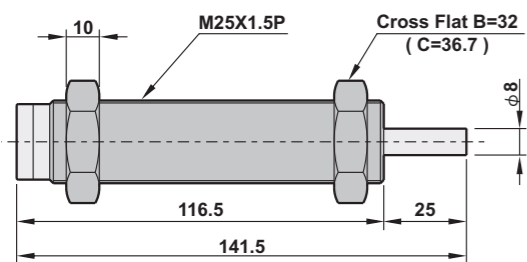


Model	A	B	C	D	D1
DA1412	75	12	12	99	87
DA1415	75	15	12	102	90
DA1416	75	16	12	106	91

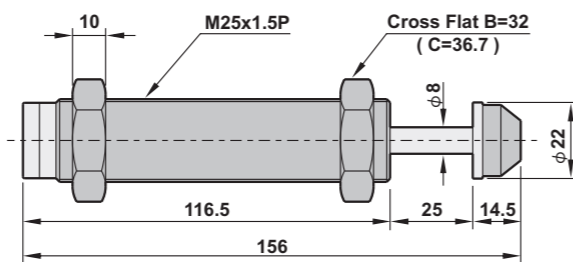
Model no.	Stroke mm	Max. Nm per cycle Nm	Effective weight We(Kg)	Max impact speed m/s	Max. Nm per hour Nm	Operating temperature °C
DA1412-H	12	20	5~27	2.6	36000	-15~75
DA1412-N	12	20	17~62	1.5	36000	-15~75
DA1412-L	12	20	40~200	0.8	36000	-15~75
DA1415-H	15	20	5~27	2.6	36000	-15~75
DA1415-N	15	20	17~62	1.5	36000	-15~75
DA1415-L	15	20	40~200	0.8	36000	-15~75
DA1416-H	16	20	5~27	2.6	36000	-15~75
DA1416-N	16	20	17~62	1.5	36000	-15~75
DA1416-L	16	20	40~200	0.8	36000	-15~75

## Dimensions

### DA2525-NC

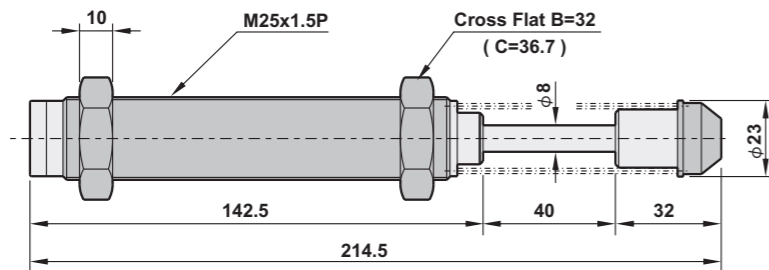


### DA2525



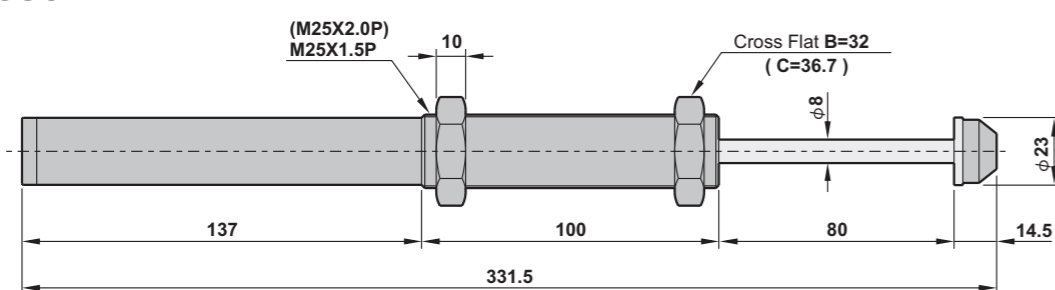
Model no.	Stroke mm	Max. Nm per cycle Nm	Effective weight We(Kg)	Max impact speed m/s	Max. Nm per hour Nm	Operating temperature °C
DA2525-H	25	78	15~69	3.2	70200	-15~75
DA2525-N	25	78	39~433	2	70200	-15~75
DA2525-L	25	78	108~1733	1.2	70200	-15~75

### DA2540



Model no.	Stroke mm	Max. Nm per cycle Nm	Effective weight We(Kg)	Max impact speed m/s	Max. Nm per hour Nm	Operating temperature °C
DA2540-H	40	122	20~108	3.5	87840	-15~75
DA2540-N	40	122	50~381	2.2	87840	-15~75
DA2540-L	40	122	244~1991	1	87840	-15~75

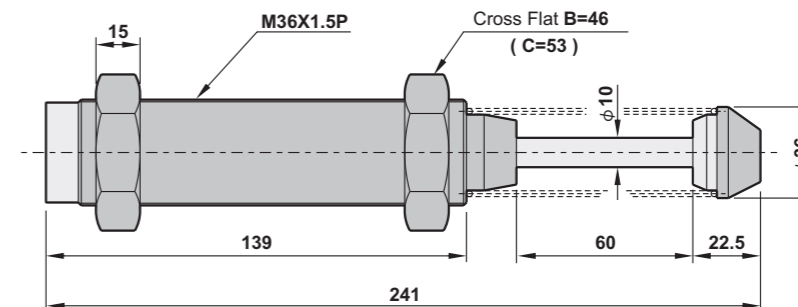
### DA2580



Model no.	Stroke mm	Max. Nm per cycle Nm	Effective weight We(Kg)	Max impact speed m/s	Max. Nm per hour Nm	Operating temperature °C
DA2580-H	80	198	24.7~99	4	87840	-15~75
DA2580-N	80	198	44~396	3	87840	-15~75
DA2580-L	80	198	176~1584	1.5	87840	-15~75

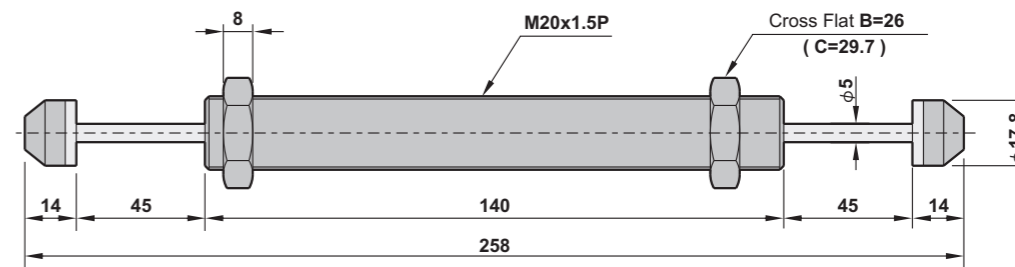
## Dimensions

### DA3660



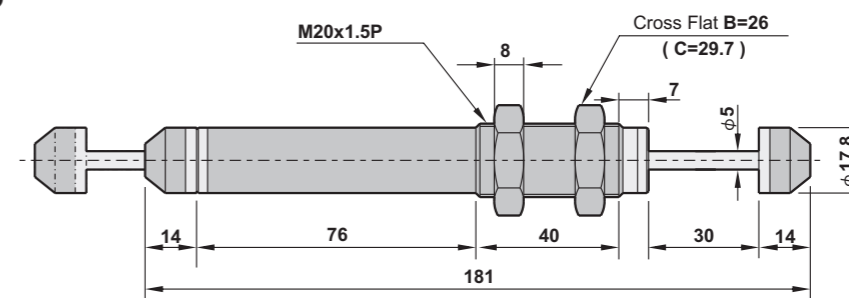
Model no.	Stroke mm	Max. Nm per cycle Nm	Effective weight We(Kg)	Max impact speed m/s	Max. Nm per hour Nm	Operating temperature °C
DA3660-H	60	260	57~231	3	124800	-15~75
DA3660-N	60	260	130~813	2	124800	-15~75
DA3660-L	60	260	520~3520	1	124800	-15~75

### DAD2030



Model no.	Stroke mm	Max. Nm per cycle Nm	Effective weight We(Kg)	Max impact speed m/s	Max. Nm per hour Nm	Operating temperature °C
DAD2030-H	30	46	9~41	3.2	55200	-15~75
DAD2030-N	30	46	23~144	2	55200	-15~75
DAD2030-L	30	46	64~575	1.2	55200	-15~75

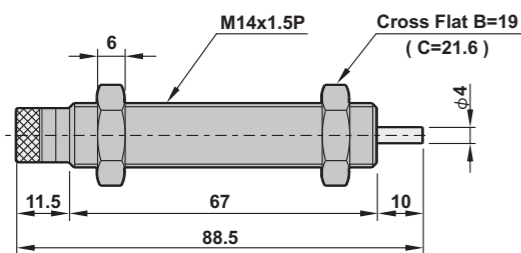
### DAD2045



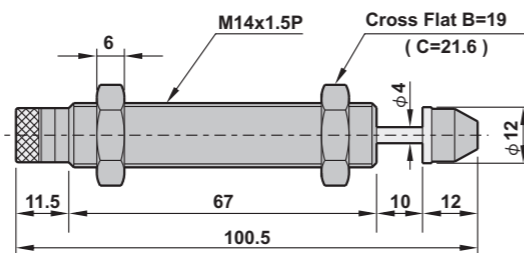
Model no.	Stroke mm	Max. Nm per cycle Nm	Effective weight We(Kg)	Max impact speed m/s	Max. Nm per hour Nm	Operating temperature °C
DAD2045-H	45	52	10~46	3.2	64200	-15~75
DAD2045-N	45	52	26~162	2	64200	-15~75
DAD2045-L	45	52	72~650	1.2	64200	-15~75

**Dimensions**

**CA1410-NC**

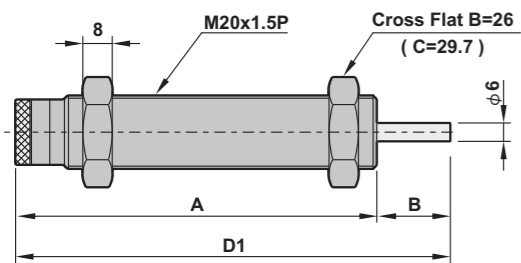


**CA1410**

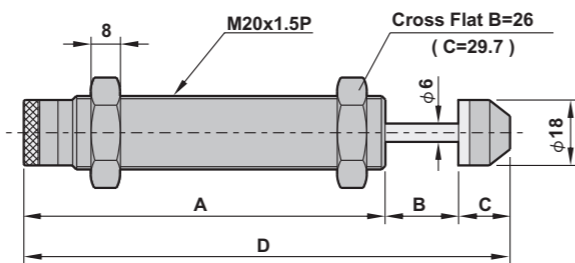


Model no.	Stroke mm	Max. Nm per cycle Nm	Effective weight We(Kg)	Max impact speed m/s	Max. Nm per hour Nm	Operating temperature °C
CA1410	10	15	2.9~120	3.2	27000	-15~75

**CA2016, 2020-NC**



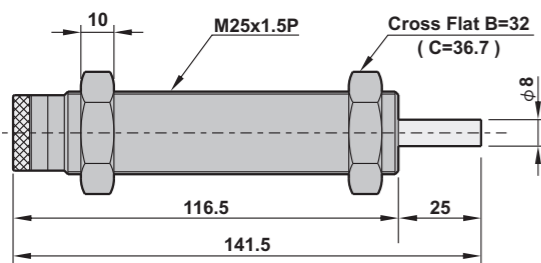
**CA2016, 2020**



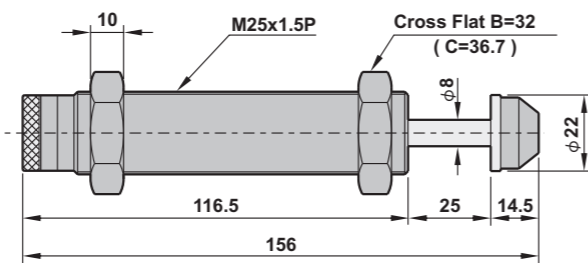
Model	A	B	C	D	D1
CA2016	100	16	14	130	116
CA2020	100	20	14	134	120

Model no.	Stroke mm	Max. Nm per cycle Nm	Effective weight We(Kg)	Max impact speed m/s	Max. Nm per hour Nm	Operating temperature °C
CA2016	16	28	5.4~224	3.2	33600	-15~75
CA2020	20	35	6.8~280	3.2	42000	-15~75

**CA2525-NC**



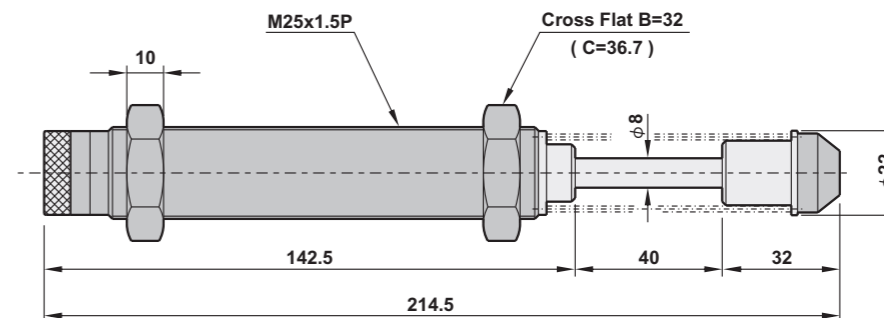
**CA2525**



Model no.	Stroke mm	Max. Nm per cycle Nm	Effective weight We(Kg)	Max impact speed m/s	Max. Nm per hour Nm	Operating temperature °C
CA2525	25	78	15~624	3.2	70200	-15~75

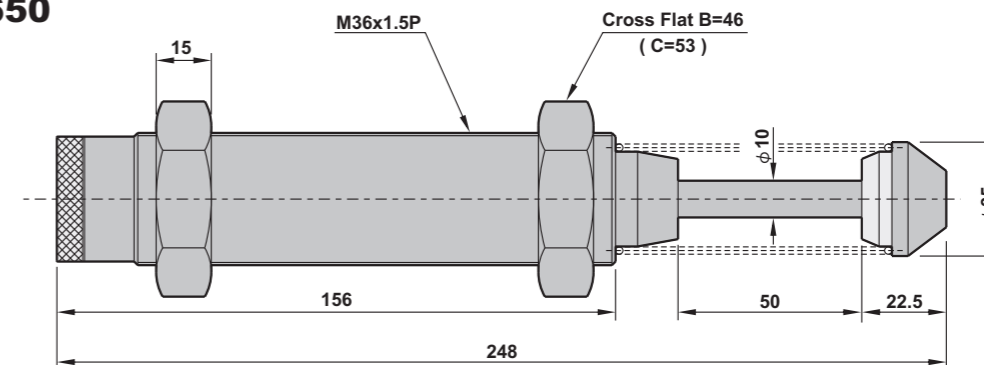
**Dimensions**

**CA2540**



Model no.	Stroke mm	Max. Nm per cycle Nm	Effective weight We(Kg)	Max impact speed m/s	Max. Nm per hour Nm	Operating temperature °C
CA2540	40	122	23.8~976	3.2	87840	-15~75

**CA3650**



Model no.	Stroke mm	Max. Nm per cycle Nm	Effective weight We(Kg)	Max impact speed m/s	Max. Nm per hour Nm	Operating temperature °C
CA3650	50	220	43~1760	3.2	105600	-15~75