

## Applicable cylinder

\* Applicable to cylinder JC, TR, HYC, HPC, HPS, HYS series

Reed switch  
AL-07R

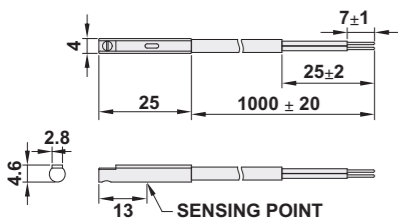


## Specifications

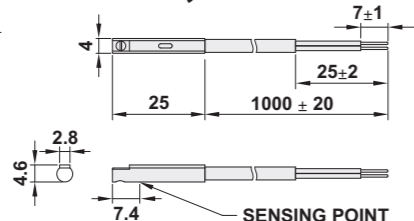
Model	AL-07R	AL-07N	AL-07P
Switching logic	SPST Normally open	Solid state output, Normally open	
Sensor type	Reed switch	NPN current sinking	PNP current sourcing
Operating voltage	5~120 VDC/AC	5~30 VDC	
Switching current	100mA max.	200mA max.	
Contact rating	10W max.	6W max.	
Current consumption	None	20mA max. at 24V	
Voltage drop	2.5V max.	0.5V at 200mA max.	
Leakage current	None	0.01mA max.	
Indicator	Red LED	Red LED	Green LED
Cable	2.8φ, 2C, Gray PVC	2.8φ, 3C, Black PVC	
Sensitivity(note 1)		40 Gauss	
Max. Switching frequency	200HZ	1000Hz	
Temperature range		-10°C ~ 70°C	
Shock (note 2)	30G	50G	
Vibration (note 3)		9G	
Enclosure classification		IEC529 IP67 (NEMA6)	
Protection circuit	None	Reverse Polarity, Short Circuit, Surge Suppression	
Sensor circuit diagram			

## Dimensions

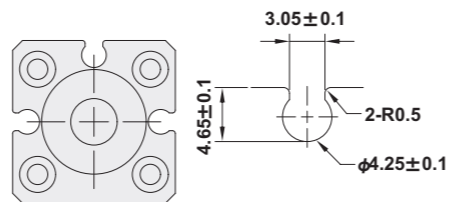
### AL-07R



### AL-07N, AL-07P



## Applicably groove



## Note

1. Measure standard target: φ 15.5 x φ 8.5t(Anisotropy Rubber Magnet)
2. Sin wave/X.Y.Z 3 Dimensions/3 times each direction/ 11mS Each time.
3. Double amplitude 1.5mm/10 Hz~55Hz~10Hz(Sweep 1min)/X.Y.Z 3 Dimensions/ 1 Hour Each time.

## Applicable cylinder

\* Applicable to cylinder JC,DR, TR, RCP series

Reed switch  
AL-11R

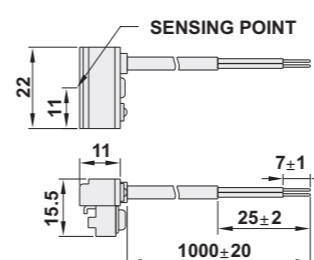


## Specifications

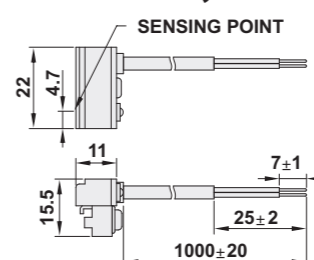
Model	AL-11R	AL-11N	AL-11P
Switching logic	SPST Normally open	Solid state output, Normally open	
Sensor type	Reed switch	NPN current sinking	PNP current sourcing
Operating voltage	5~240 VDC/AC	5~30 VDC	
Switching current	100mA max.	200mA max.	
Contact rating	10Wmax.	6W max.	
Current consumption	None	22mA max. at 24V	20mA max. at 24V
Voltage drop	3.5V max.	0.5V max. at 200mA	
Leakage current	None	0.01mA max.	
Indicator	Green LED	Red LED	Green LED
Cable	3.3φ, 2C, Gray PVC	3.3φ, 3C, Black PVC	
Sensitivity(note 1)		40 Gauss	
Max. Switching frequency	200Hz	1000Hz	
Temperature range		-10°C ~ 70°C	
Shock (note 2)	30G	50G	
Vibration (note 3)		9G	
Enclosure classification		IEC529 IP67 (NEMA6)	
Protection circuit	None	Reverse Polarity, Short Circuit, Surge Suppression	
Sensor circuit diagram			

## Dimensions

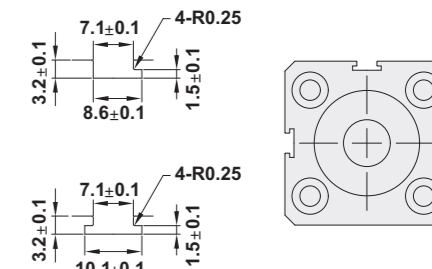
### AL-11R



### AL-11N, AL-11P



## Applicably groove



## Note

1. Measure standard target: φ 15.5 x φ 8.5t(Anisotropy Rubber Magnet)
2. Sin wave/X.Y.Z 3 Dimensions/3 times each direction/ 11mS Each time.
3. Double amplitude 1.5mm/10 Hz~55Hz~10Hz(Sweep 1min)/X.Y.Z 3 Dimensions/ 1 Hour Each time.