

## Applicable cylinder

\* Applicable to cylinder JC, TR, HYC, HPC, HPS series

Reed switch  
AL-16R

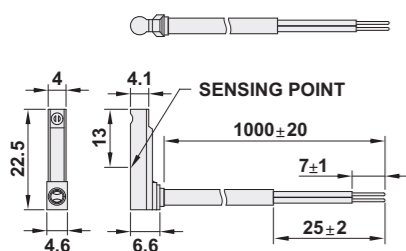


## Specifications

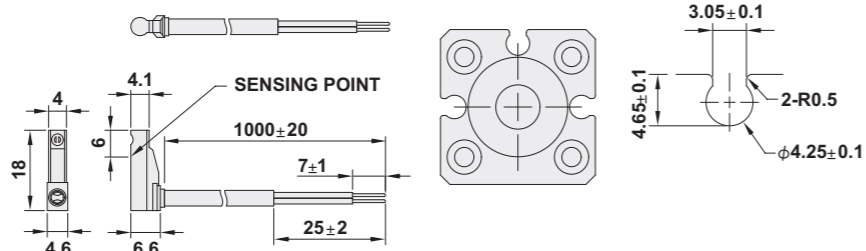
Model	AL-16R	AL-16N	AL-16P
Switching logic	SPST Normally open	Solid state output, Normally open	
Sensor type	Reed switch	NPN current sinking	PNP current sourcing
Operating voltage	5~120 VDC/AC	5~28 VDC	
Switching current	100mA	200mA	
Contact rating	10W(VA)	6W	
Current consumption	None	15mA max. at 24V(switch active) 16mA max. at 24V(switch active)	
Voltage drop	2.5V max. at 40mA DC	0.5V at 200mA 24VDC	
Leakage current	None	0.01mA max.	
Indicator	Red LED	Red LED	Green LED
Cable	2.8φ, 2C, Gray PVC	2.8φ, 3C, Black PVC	
Sensitivity(note 1)		40 Gauss	
Max. Switching frequency		1000Hz	
Temperature range		-10°C ~ 70°C	
Shock (note 2)	30G		50G
Vibration (note 3)		9G	
Enclosure classification		IP67 (NEMA6)	
Protection circuit	None	Reverse Polarity	
Sensor circuit diagram			

## Dimensions

### AL-16R



### AL-16N, AL-16P



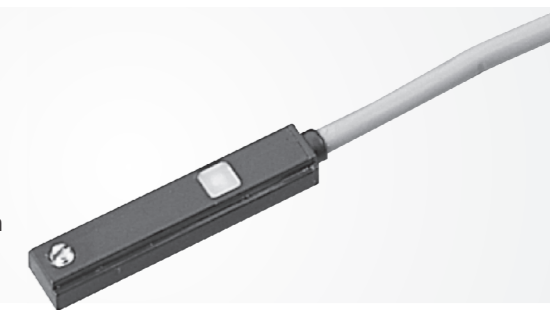
## Note

1. Measure standard target: φ 15.5 x φ 8.5t(Anisotropy Rubber Magnet)
2. Sin wave/X.Y.Z 3 Dimensions/3 times each direction/ 11mS Each time.
3. Double amplitude 1.5mm/10 Hz~55Hz~10Hz(Sweep 1min)/X.Y.Z 3 Dimensions/ 1 Hour Each time.

## Applicable cylinder

\* Applicable to cylinder ZS, ZF, ZK series

Reed switch  
AL-30R

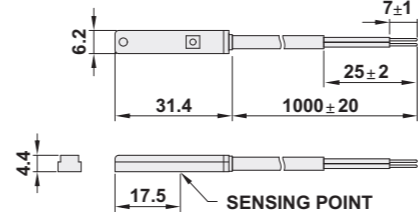


## Specifications

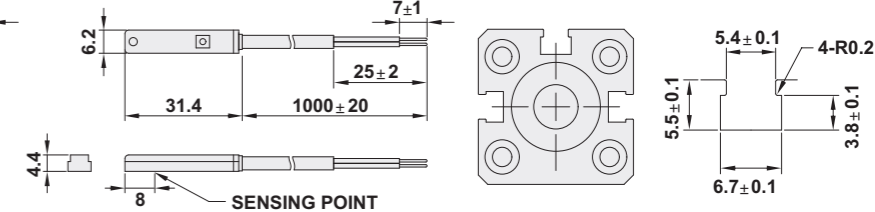
Model	AL-30R	AL-30N	AL-30P
Switching logic	SPST Normally open	Solid state output, Normally open	
Sensor type	Reed switch	NPN current sinking	PNP current sourcing
Operating voltage	5~120 VDC/AC	5~28 VDC	
Switching current	100mA	200mA	
Contact rating	10W(VA)	6W	
Current consumption	None	15mA max. at 24V(switch active) 16mA max. at 24V(switch active)	
Voltage drop	2.5V max. at 40mA DC	1.5V at 200mA 24VDC	
Leakage current	None	0.01mA max.	
Indicator	Red LED	Red LED	Green LED
Cable	2.8φ, 2C, Gray PVC	2.8φ, 3C, Black PVC	
Sensitivity(note 1)		40 Gauss	
Max. Switching frequency	200Hz		1000Hz
Temperature range		-10°C ~ 70°C	
Shock (note 2)	30G		50G
Vibration (note 3)		9G	
Enclosure classification		IP67 (NEMA6)	
Protection circuit	None	Reverse Polarity	
Sensor circuit diagram			

## Dimensions

### AL-30R



### AL-30N, AL-30P



## Note

1. Measure standard target: φ 15.5 x φ 8.5t(Anisotropy Rubber Magnet)
2. Sin wave/X.Y.Z 3 Dimensions/3 times each direction/ 11mS Each time.
3. Double amplitude 1.5mm/10 Hz~55Hz~10Hz(Sweep 1min)/X.Y.Z 3 Dimensions/ 1 Hour Each time.