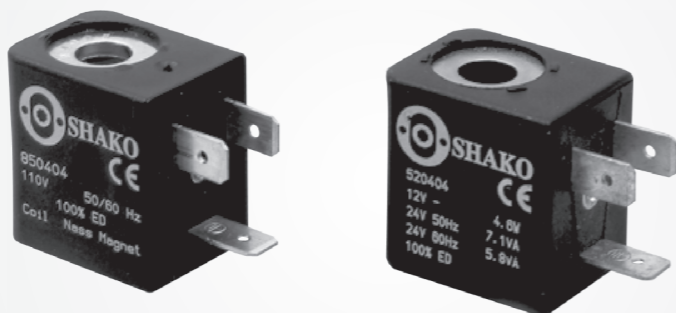


Features

- * High temperature resistant thermoplastic contains 30% PC.
- * Brass winding H class heat resistant up to 200°C according to IEC317-8.
- * Built-in magnetic yoke made by low carbon magnet.

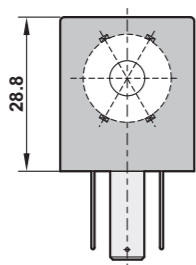
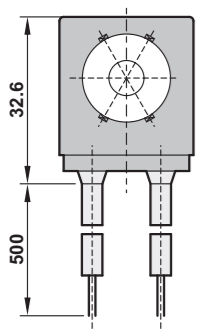
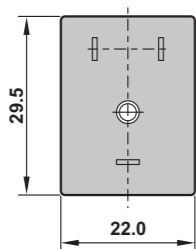
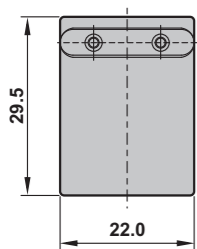
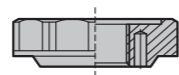
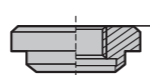
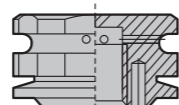

Order code

Voltage	Order code	Remarks
220VAC	SA20822DFSN	Standard (6.0VA)
110VAC	SA10822DFSN	Standard (6.0VA)
24VDC	SD90822DJSN	Standard (4.8W)
24VAC	SA90822DHSN	Option (8.5VA)
220VAC	SA20822DHSN	Option (8.5VA)
110VAC	SA10822DHSN	Option (8.5VA)
380VAC	SA30822DHSN	Option (8.5VA)

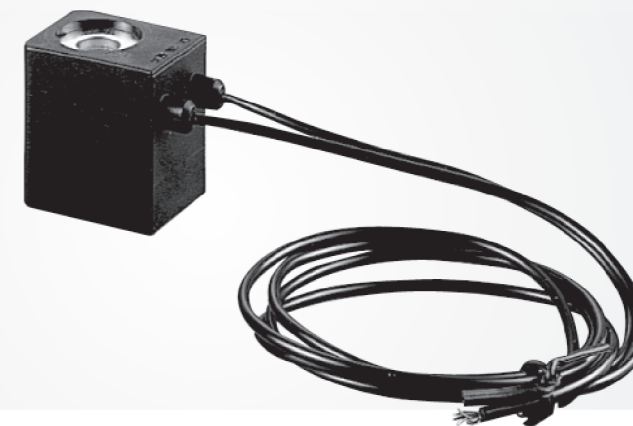
※Special voltage on your request

Specifications

Operating	Normally closed
Coil width	22mm
Voltage tolerance	±10%
Duty cycle	100% ED
Ambient temperature	-20°C~50°C
Isolation class of material	F (according to Din VDE0580)
Degree of protection	IP65 (according to EN60529)
Moulding material	Thermoplastic (PA, PPS)
Rated power DC	4.8W
Rated power AC (60Hz)	4.9VA
Rated power AC (50Hz)	6.0VA
Type	DIN

Dimensions
Lead wire
DIN type

Plastic knurled nut
NVS5000031

Metal knurled nut
KVS5000032

Exhaust protector
NVS5000030

Features

- * High temperature resistant thermoplastic contains 30% PC.
- * Brass winding H class heat resistant up to 200°C according to IEC317-8.
- * Built-in magnetic yoke made by low carbon magnet.

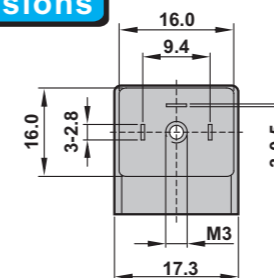

Order code

Voltage	Order code	Type	Remarks
220VAC	SA20716FCXA	Lead wire	Standard (3.6VA)
220VAC	SA20716DCXA	DIN	Option (3.6VA)
110VAC	SA10716FCXA	Lead wire	Standard (3.6VA)
110VAC	SA10716DCXA	DIN	Option (3.6VA)
24VAC	SA90716FEXA	Lead wire	Standard (3.6VA)
24VAC	SA90716DCXA	DIN	Option (3.6VA)
24VDC	SD90716FEXA	Lead wire	Standard (2.5W)
24VDC	SD90716DEXA	DIN	Option (2.5W)
12VDC	SD70716FEXA	Lead wire	Standard (2.5W)
12VDC	SD70716DEXA	DIN	Option (2.5W)

※Special voltage on your request

Specifications

Operating	Normally closed
Coil width	16mm
Voltage tolerance	±10%
Duty cycle	100% ED
Ambient temperature	-20°C~50°C
Isolation class of material	F (according to Din VDE0580)
Degree of protection	IP65 (according to EN60529)
Moulding material	Thermoplastic (PA, PPS)
Rated power DC	2.5W
Rated power AC(60Hz)	4.5VA
Rated power AC(50Hz)	4.0VA
Type	Lead wire (Standard) or DIN(Option)

Dimensions
DIN type

Lead wire
